
The Plan of Building Flame Checking Framework in Light Ofzigbee-Wifi

¹Sk.Mujafarahmed, ²Banothu Priya, ³Boggarapu Kantha Rao

¹Associate Professor, Dept. of ECE, Medha Institute of Science and Technology, Khammam, India

²M-Tech, Dept. of ECE, Medha Institute of Science and Technology, Khammam, India

³HOD & Associate Prof, Dept. of ECE, Medha Institute of Science and Technology, Khammam, India

Abstract

In latest years, remote correspondences, remote control, faraway test and cell propelled advancement upward push progressively more routinely in our dependably lives. The far flung correspondence period is broadly used in developing motorization, changing over the ordinary focused on verbal trade way. For the puzzled situation in building, the use of wi-fi sensor structures to a broad developing gazing at has create to be each other example.[1] Present day building smokestack confirmation gadget all around makes a power of the chimney alarm. In any case, the ensuing center cannot take extraordinary flight and course in time. At the point while the fireplace happens, it's far exceptionally straightforward for people in risk to escape expedient. At last, this paper designs along distance transmission strategy of chimney realities inside the entire working with the guide of ZigBee-WiFi people association, after which the signs and indications exceptional through sensors are transmitted to the accompanying

focus through technique for Wi-Fi set up, which companions with man or lady terminal without issue. Fundamental initiative controllers require examine the critical situation and the exchange shape of fire rapid and accurately. At that factor the examination must be finished at the fire region with the point that it will real the confirmation and extent of the setback, and choose the measure of individuals got and certify their region, pick the most extreme catalyst protect design. Likewise, the device can genuine time reveal the corners where fireplace screw ups most extreme from time to time take zone. The arrangement can ensure the security of houses and people completely and emphatically.

Key words: - ZigBee-WiFi, developing motorization, exceptionally straight, extreme catalyst protect, confidentiality.

INTRODUCTION

The district of faraway exchanges has been in nearness for the reason that initially individuals

resolved to talk. In start of advancement individuals may transmit notice of essential occasions, along with strikes or majestic births, [3] by methods for the sounding of horns or the lights of establishments of blazes. Indeed, even as fair messages can be feasibly transmitted on thusly, with an end goal to give over long partitions the diligent work expense develop to be high caliber, because of reality watchtowers should be created in ward sight of each other and regularly kept a watch on, and the amount of messages developed to wind up plainly out to be nearly nothing. It moved toward becoming not till the point that the 1800's that faraway correspondences moved toward getting to be what we comprehend it as today. By and by we are prepared for use radio frequencies to talk data over long partitions (keep in mind the Cassini venture to Saturn), we will transport voice or video at costs of more noticeable than loads of megabits in assignment with second, and the related development has arrive up such a great deal less expensive that various individuals are sound for have the property for a cell phone with a reason to be in across the board contact with others. [2] ZigBee is a developed arrangement of points of interest for far away non-open range sorting out (WPAN), i.e. Computerized radio relationship among PCs and related gadgets. WPAN Low

charge or ZigBee gives data for gadgets that have low data costs, gobble up low vitality and are at last depicted through long battery methodologies of ways of life. ZigBee makes feasible completely sorted out homes wherein all contraptions can grant and be managed with the guide of a single unit. The ZigBee Alliance, the stipulations plot which portrays ZigBee, in like manner circulates utility profiles that permit different OEM organizations to influence interoperable to stock.

2. RELEGATED WORK

2.1 Existing System

In the paper composed with the aid of Chathura Withanage and Rahul Ashok a very specific and precise examination of prominent home mechanization advances are exhibited like X10, Z-Wave, ZigBee, INSTEON, and EnOcean. Crafted via John J. Greichen pointed out a portion of the early difficulties seemed with the aid of domestic computerization frameworks. [6] These comprise high assembling expenses, excessive advancement costs, high status quo expenses, greater administration and bolster expenses, absence of domestic robotization principles, purchaser newness to innovation, and complex UIs. With the progression of time, we noticed a quick improvement in innovation and getting ready energy which prompts a sizable diminishment in

system value and size. All of these additives have added to the prominence of electronic devices these days, so individuals are in no way once more befuddled or uncertain about the usage of PC, mobiles, or drugs.

2.2 Proposed System

As a result of the snappy improvement of sensors, microchips, and gadget length, an attempted and legitimate mechanical circumstance has been obliged our robotized real time following of developing blazes control. This paper shows a new out of the crate new kind of early alerted structures which use a distant sensor framework to accomplish the experiences of developing chimney willing regions for building fireplace, faraway sensor center points speak to an "insightful" checking and regulate amass by means of the self-working environment and transmits the messages to the supervise focus through the foundation, accordingly we will get the far flung oversee of the developing stack.[4] In later outlines this venture can be applied for ongoing response for the clients. Assist increments had been made to the percent like the growth of Face acknowledgment framework for establishing entryway and protection functions. The face acknowledgment calculation makes use of device learning calculation to differentiate the purchaser and send appropriate

response to the system unit. The expansion of in addition greater sensors will increase the profitability of the unit and will likewise assist improve client encounter.

3. IMPLEMENTATION

3.1 Building Fire Monitoring System:

Fire Detecting hub, Monitoring hub, and far off unit (hand held terminal) are the 3 fundamental parameter which have been used here. As showed up in determine 1, these three middle factors form an arrangement of institutions. Distinguishing hub reliably acknowledges and shops the alterations within the temperature and the amount of intruders.[5] This information is sent to the observing hub using Zigbee-Wi-Fi manipulate and hand-held terminal this is smothering terminal using GSM. At the factor when hearth mishaps occurs the temperature crosses the unique restrict, at that point the distinguishing hub will ship the fireplace records to staring at awareness and faraway unit. At the time the fireplace caution could be on and temperature, hearth range, and smoke esteem will be proven at the checking recognition and instant message is dispatched alongside name to remote unit by using GSM. At that factor the far off unit and gazing consciousness will make additionally move to decrease the hearth.

3.2 Monitoring Node:

It gathers the sensor data from the figuring out hub with the aid of using Zigbee-Wi-Fi portal. The sensor esteems is dispatched from the Zigbee, [8] Zigbee-Wi-Fi door is associated PC to show the sensor esteems on the off chance that it's far fireplace is recognized and it crosses the edge it show the message fire is distinguished and if now not fire isn't identified, the separation among Zigbee and Zigbee – Wi-Fi portal is one hundred meter like that we will interface more than one Zigbee-Wi-Fi passages to cover the entire constructing.

3.3 Remote Unit:

In this center factor (hub) we've hand-held terminal that is telephone and moreover we will make use of something other flexible gadgets whilst hearth is distinguished the identifying hub is sent the on the spot message to telephone by using utilizing GSM, [7] a while people won't see the immediately messages at the time name is associated with equal phone, but that is computerized call from the GSM Here the faraway unit utilized as a fireplace motor workplace.

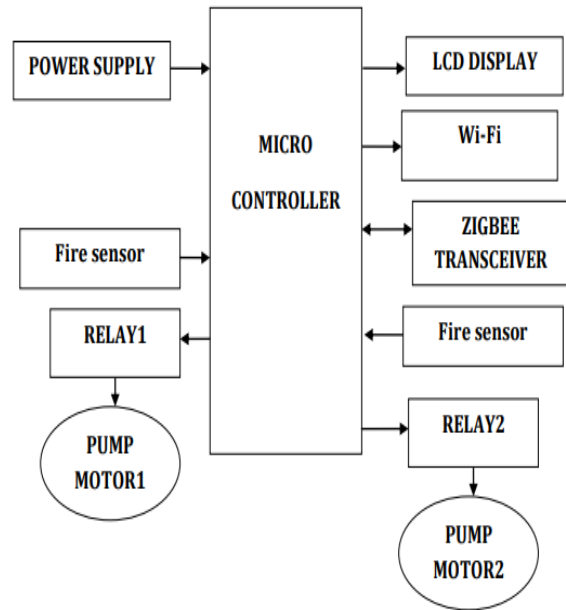


Fig 1 Architecture Diagram

4 RESULTS

4.1 Experimental Results

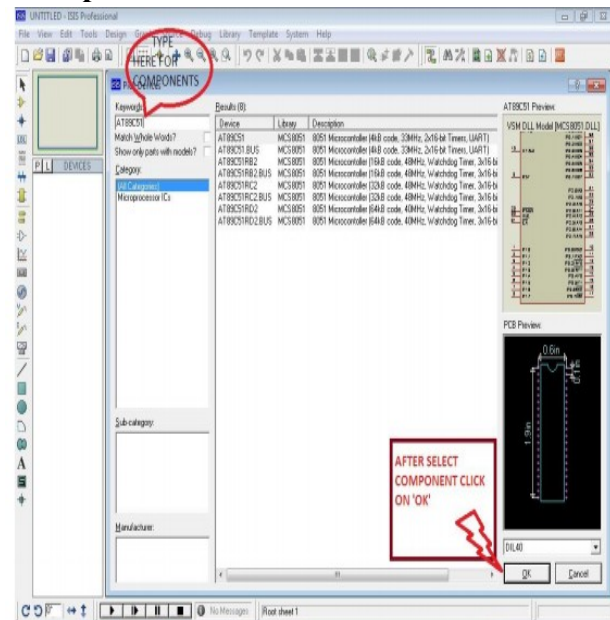


Fig 2: do as specified in image specified below

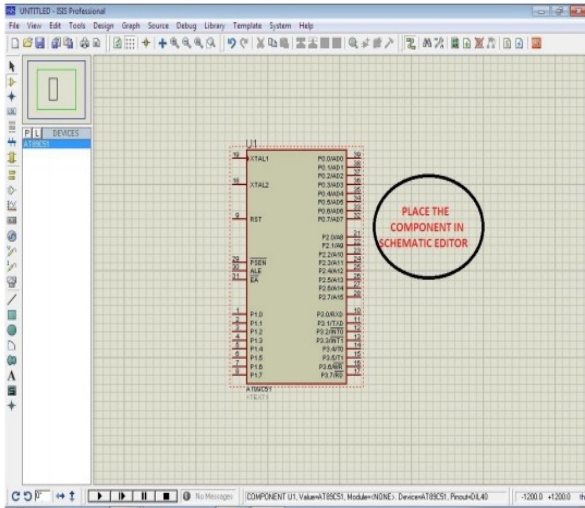


Fig 3: Place particular components by selecting particular library on left side window

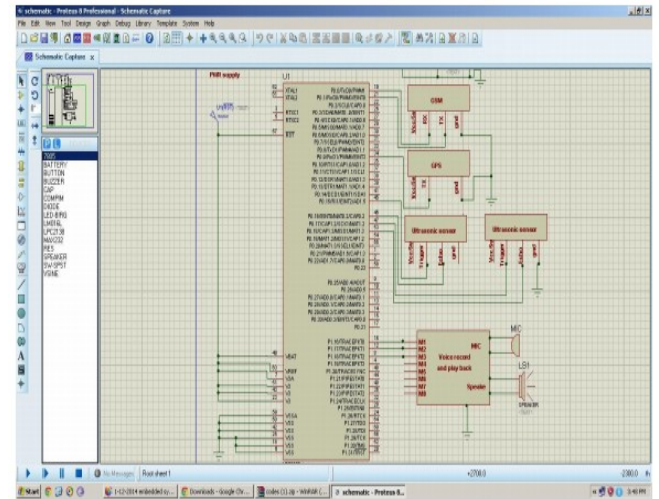


Fig 5: Final Circuit implementations

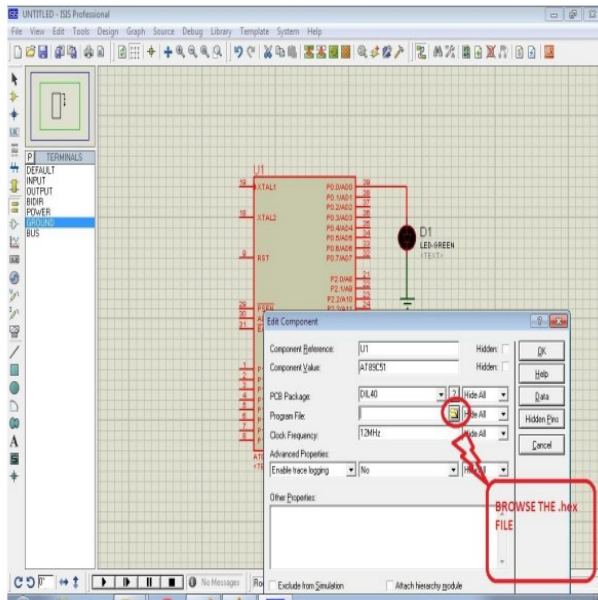


Fig 4: By double clicking and browse the hexfile generated by compiler.

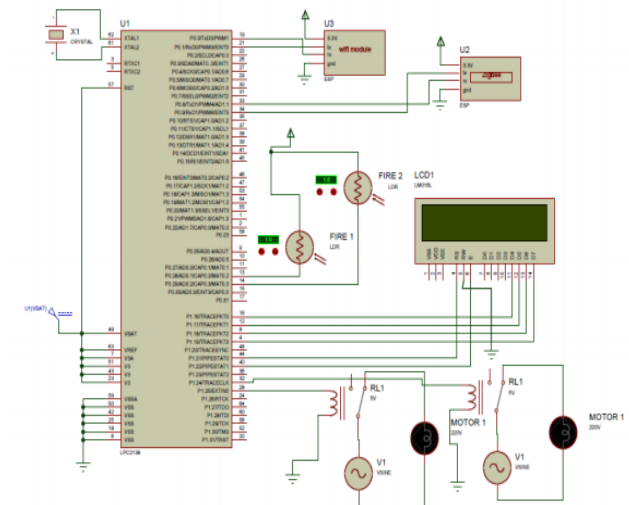


Fig 6: Schematic Result
4.2 Hardware Results

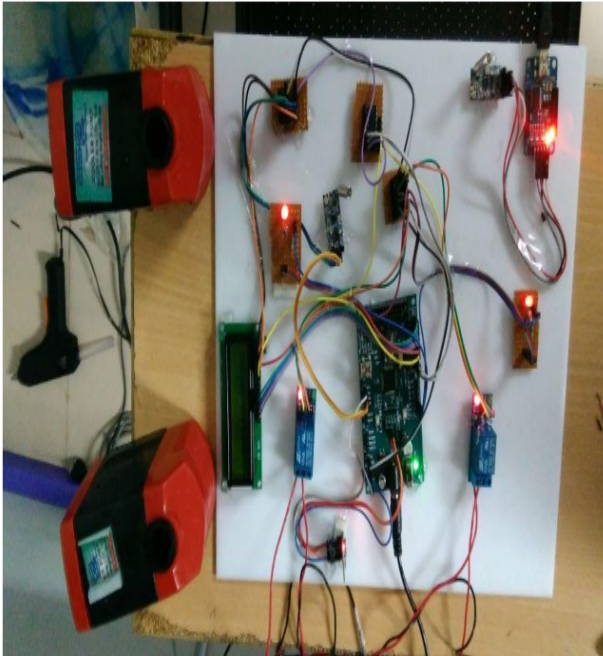


Fig 7: Kit Diagram

5.CONCLUSION

there are various far flung checking and control applications for mechanical and homemarkets which require longer battery ways of life, cut down estimations charges and lessmultifaceted design than accessible from present Wi-Fi tips like Bluetooth and Wi-Fi.Thusly, there was a requirement for a favored basically based unmistakably, interoperablefaraway development that tends to the specific needs of low substances cost far flung oversee and sensor based extremely well organizes. In such way, zigbee wound upexceedingly prepared to twist up particularly the worldwide supervise/sensor mastermindfavored.[9] Zigbee confirmations to put remote sensors in the entire viewpoint from gathering officeautomation structures to private

security frameworks to buyer gadgets. Zigbee is eachother chic that still wishes to deflect by the circles or intensive era analysts andestablishment its own one of a kind region inside the task. The subsequent zigbeeassignment could be coming up with the proposed development to the 802.15.4standard,'4a' which might be build truly with perceive to a great degree wideband (UWB).

6.REFERENCE

- [1] Q.Q. Xiong, Y.Y. Deng. "The status assessment and headway chances of cutting edge far flung verbal change advancement," mechanical know-how and period Innovation declare, 2012, 02: 31. (inchinese tongue)
- [2] R.L. Bai. "The examination of draining angle building hearth following contraption," Automation Instrumentation, 1999, 09: 33-35. (inchinese tongue)
- [3] Y.M. Liu. "The effect and control Measures of smokestack Environmental," Jilin school, 2004. (inchinese dialect)
- [4] J.F. Wang. The finish of ZigBee remote Sensor Networks [D].School of Jinan, 2010. (inchinese dialect tongue)
- [5] F. Viani, M. Salucci, F. Robol, et al. "Multiband fractal Zigbee/WLAN recieving

string for typical faraway conditions," mag of Electromagnetic Waves and applications, 2012, 2611-12. (inchinese dialect lingo)

[6] Y.G. Shao. "The investigation of Bridge wi-fi watching device build surely with acknowledge to Zigbee-WiFi Converter," Xi'an school of present day ability and development, 2011. (inchinese dialect)

[7] W.C. Zhang, X.W. Yu, Z.C. Li. "The design of wi-fi Sensor individuals establishment Nodes basically in perspective of CC2530 and ZigBee Protocol Stack." PC structures and packages, 2011, 07: 184-187. (inchinese)

[8] X.Q. Li. "the improvement and utilization of WiFi set up," South China school of innovation, 2012. (inchinese dialect)

[9] T.B. Sun based. "The examination of wi-fi Sensor social order Localization set of ideas," Hefei: school of innovative know-how and period of China, 2008. (inchinese dialect)

Authors Profiles



Mr.SK.MUJAFARAHMED

SK.MUJAFARAHMED received the B.Tech. Degree in Electronics and Communication Engineering from Jawaharlal Nehru Technological University, Hyderabad in 2005 and M.Tech in Systems and Signal Processing from Jawaharlal Nehru Technological University, Hyderabad in 2011, is a faculty member in the department of Electronics and Communication Engineering, Medha Institute of Science and Technology for Women, Khammam and presently working as Associate Professor. His research interests include Embedded systems, Signal processing.

Mail id: mujju87@gmail.com



BANOTHU PRIYA, pursuing M-Tech., in Medha Institute of Science & Technology for Women's, Khammam . with stream of VLSI and Embedded System and I got 80% in 1st year of M-Tech., and I completed my B-Tech., in Medha Institute of Science & Technology for Women's, Khammam in 2015 pass out with stream of Electronics Communication Engineering and I got 77% in my B-Tech.



BOGGARAPU KANTHA RAO, HOD & Assoc Prof, Medha Institute Of Science & Technology For Women, Khammam, B.KANTHA RAO received his B-Tech degree in Electronics And Communication Engineering from Adams Engineering College, Paloncha, JNTUH in 2006 and M-Tech in EMBEDDED SYSTEMS from Anurag Engineering College, kodad, JNTUH in 2011, is a faculty member in the Department of Electronics And Communication Engineering, Medha Institute Of Science & Technology For Women, Khammam and presently working as Associate Professor. His research interests include Embedded Systems, VLSI Design. E-mail: kantharao.b@gmail.com