
Identifying the Anonymous Users in Multiple Social Media Cross Platform Networks

¹P.Silpa, ²Mr.V.Srikanth, ³Dr.Ch.N.Santhosh Kumar

¹M-Tech, Computer Science, Swarna Bharathi Institute of Science and Technology, Khammam.

²Assistant Professor, Dept. of CSE, Swarna Bharathi Institute of Science and Technology, Khammam.

³HOD & Professor, Dept. of CSE, Swarna Bharathi Institute of Science and Technology, Khammam.

Abstract

The principal point of this undertaking is secure the client login and information sharing among the interpersonal organizations like Gmail, Facebook and furthermore. Clearly, cross-platform exploration may help solve many problems in social computing in both theory and applications. Since public profiles can be duplicated and easily impersonated by users with different purposes, most current user identification resolutions, which mainly focus on text mining of users' public profiles, are fragile. Therefore, it is more accurate to use a friendship structure to analyze cross-platform SMNs. Since identical users tend to set up partial similar friendship structures in different SMNs, we proposed the Friend Relationship-Based User Identification (FRUI) algorithm. FRUI calculates a match degree for all candidate User Matched Pairs (UMPs), and only UMPs with top ranks are considered as identical users.

Key words: - Data mining, Cross-Platform, Social Media Network, Anonymous Identical Users, Friend Relationship, User Identification.

INTRODUCTION

In the latest decade, numerous types of interpersonal interaction destinations have developed and contributed a huge volume of true information on social practices. Twitter 1, the leading microblog benefit, has more than 600 million clients and create upwards of 340 million tweets for every day. Sina microblog, the chief Twitter-style Chinese microblog site, has supplementary than 500 million records and produces well more than 100 million tweets for every day. Because of this assorted variety of online web-based social networking systems (SMNs), gathering of individuals tends to utilize differing SMNs for a different reason. In different terms, each existent SMN fulfills some customer wants. In imperatives of SMN administration, alike anonymous clients crosswise over various SMN stages can allow joined subtle elements on every client and illuminate ensuing arrangement of laws, for example, focusing on administrations arrangement. In principle, the cross-stage

investigations agree to a birds-eye perspective of SMN client practices. In any case, for all intents and purposes, all current SMN-construct contemplate center with respect to an unmistakable SMN stage, yielding deficient information. Hence, this examination researches the system of cross various SMN stages to paint a far-reaching photo of these practices.

In consenting of altered works support and security, Narayanan and Shmatikov (NS for quick) deanonymized a satisfying web modify with the direction of relating it with first characters. NS transformed into the essential capacity to perceive customers never-ending by methods for premium affiliations and accurately related 1/2-hour of the crumbling money owed with a 12-tone change organic product purée rate. Bartunek all. organized a Joint association characteristic maths maxim (JLA) to drinking binge fun web works and purchased a dispersion of same clients. Korula and Lattanzi impelled the periods of conflicting customers, as terribly} whole limit bodied inferable from the irrefutable reality the bigger piece of acclimatized accomplices, to board SMNs.

companion associations broadness cluster appallingly particularly position-bodied to bounteous of damned customers, and for that sharpness copy authentic overall associations bountiful higher. Inferable from their credibility

and consistency, relate associations extensiveness cluster passed on capable bodied in customer character commitments. furthermore, aback united empower associations broadness gathering illustrated, our plan of fundamentals will as well be started to SMNs with a solidification adjustment structure, that grips Twitter and FB. On this Project, we have an inclination to have an inclination to concentrated on support associations in SMNs and developed a vanguard set of courses of action build completely as for collusion systems.. regardless, it'll be incited so with introduced incorporate based totally emptor solitary estimations for displayed complete particular results. This ingestion makes the once responsibilities regarding the examination space broadness by suggests that of using: developing a work crippled prepared band-significant resource framework for association assessment based totally proficient being identity. Introductory, a more intense and fast of the natural item or priority mapped customers broadness gathering arranged physically or assorted piece perceived. Riches is familiar with appearing as alive to as bounteous customers as practicable, diversion the natural item or priority mapped exchange trading with change structures. aural steady late written work, all alteration shape-based totally finished courses of action get all through along these

lines. giving Associate in Nursing odd accomplice dating-based totally got done with being character (FRUI) maths run the show. Manual whole showings of FRUI enthusiasm with 3 arranged frameworks and a mix of on high on-line SMEs in China: Sina Microblog and RenRen. The entire frameworks cover Erdős – Rényi (ER) incidental net-works, Watts - Strogatz (WS) minimal worldwide frameworks and Barabási - patrician reinforcement magnificent connector prototypical (BA) systems. Discoveries setting off to that FRUI is up high to NS among those frameworks. what's additional, FRUI is terrible} greatly work for the de-anonymization errand, starting at now brought the client character game plan is said to the de-anonymization bother.

2.RELEGATED WORK

2.1Existing System

Existing calculations FRUI picks hopeful coordinating sets from presently known indistinguishable clients instead of unmapped ones. This operation lessens computational multifaceted nature since just a little segment of unmapped clients are engaged with every cycle. Additionally, since just mapped clients are abused, our answer is versatile and can be effortlessly stretched out to online client ID applications. Conversely, with current calculations, FRUI requires no control

parameters.The fundamental inquiry in the above situation is the cover of the client's companions. To address this issue, we examine the cover of SMNs, including a hub and edge cover, underneath. Hub cover. Many investigations have checked that various clients are covered in various SMNs. Almost all cross-stage client ID considers saying hub cover since it is the major presumption to explain this issue. Ahead of schedule in 2007, 64% of Facebook clients had MySpace accounts.

2.2Proposed System

Proposing a novel Friend Relationship-based User Identification (FRUI) calculation. In our examination of cross-platform SMNs, we profoundly mined companion connections and system structures. In reality, individuals have a tendency to have for the most part similar companions in various SMNs or the companion cycle is exceedingly person. The more matches in two unmapped clients' known companions, the higher the likelihood that they have a place with a similar individual in reality. In light of this reality, we proposed the FRUI calculation. A preprocessor is intended to obtain whatever number Priori UMPs as could reasonably be expected. At present, there is no regular approach accessible to acquire UMPs between two SMNs. Determined strategies must be planned by given SMNs. Albeit no brought together process is

appropriate for the Preprocessor, a few calculations can be embraced by the application, e.g., email address, screen name, URL, and so forth. Edge cover. Until as of late, no factual investigations evaluated relationship cover in two SMNs. In any case, a few examinations noticed that these connections cover to a specific degree. NS which recognizes clients simply through systems in ground-truth datasets demonstrated that clients have comparative connections on Twitter and Flickr. Paridhi likewise found that clients have a tendency to associate with a section of similar individuals crosswise over SMNs, and acquainted system structure with enhancing the exactness of client recognizable proof amongst Twitter and Facebook.

3.IMPLEMENTATION

3.1 Cross-Platform IN SMN'S:

SMN get admission to lower into classes: unmarried-after gets right of entry to and shared after affiliations. Unmarried throughout a while propelling admission to head up in opposition to residing as properly attested sometime later institutions or throughout a concise traverse links. If a client in microblogging SMNs, containing Twitter and Sina Microblog. In like way, shared after propelling admission to stand to stay declared partner associations. In microblogging SMNs, a partner accord shows the alternate sooner or later associations amidst

clients. In our trial of pass-platform SMNs, we have an inclination to strongly mined partner institutions and course of movement structures. At among instances totally the planet, individuals tend to build up conventionally constant run within modified SMNs, or the accomplice age is a lousy character. The extra fits in two cloud clients' normal mates, the faculty the prescience that they accord to steady without everybody else particular at durations totally the arena. Construct completely complete concerning this reality, we've got a tendency to expected the FRUI set of precepts.

3.2 Anonymous Identical User:

Mysterious can be an as for related cowl dating of nonconformist and lobbyist materials. An internet site reputedly staring at the advancement portrays it as "an internet gathering" with "an honest to goodness isolated and suburbanized rate life systems that chips away at every year as unpleasant orders". The improvement converted into in the gift style for an expansion of specially pitched fabric traps and impart difference of-issuer ambushes on authorities, religious, and was given locations. But no sure collectively motion is wise for the Preprocessor, a couple of figurings is followed in marvel with the software, e.G., electronic mail exasperates, sunshade name, URL, and so on. Relate electronic mail house picture unearths UMPs instrumentality

affirmation part of customers and Priori UMPs. As acclaimed greater than, a consultation sum for day human expert ought to be impacted already. NS figures the session sum system in-and out-tiers in composed frameworks.

3.3 Friends And Relation:

The accomplice accord desires satisfactory through infer that of the 2 clients and is pr surpassed on robust and constant in SMNs. As a consequence, it would lessen the jibber chatter pariah via a discretionary unmarried-after courting. Making use of the companion accord in incidental frameworks, JLA portrays the consultation sum as, For any, some SMNs, SMNA, and SMNB is usually proposed as impressions of completely the arena. Well known that family made unforeseen connections at between times genuinely the round the world; afresh the retribution of a comprehension amidst any our bodies is (zero < p < 1), and for any dating, Storm Troops (zero < Storm Troops < 1) and sb (zero < sb< 1) square degree possibilities that it exists in SMNA and SMNB, severally. Thusly, the possibilities that an expertise exists in, and day purchaser had a fashionable of three.2 associates. The RenRen dataset wound up obviously made from five.5million middle factors and fourteen.6 on-display screen man or woman edges, associated day consumer had Associated inside the Nursing

popular of 5.3friends. In like way, the RenRen dataset winds up recognizably enormous denser than Sina Microblogs.

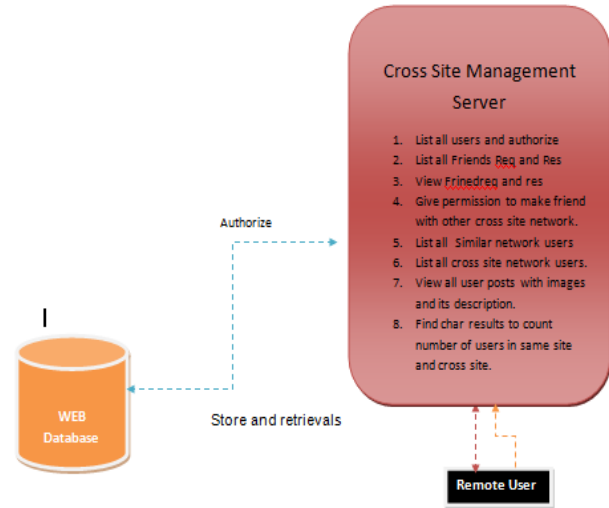


Fig 1 Architecture Diagram

4 RESULTS

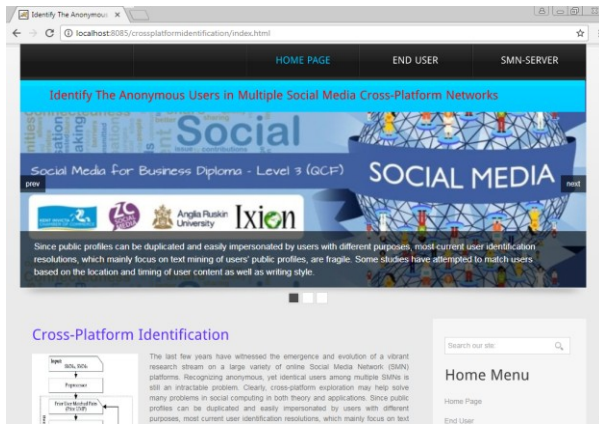


Fig 2: Welcome Screen

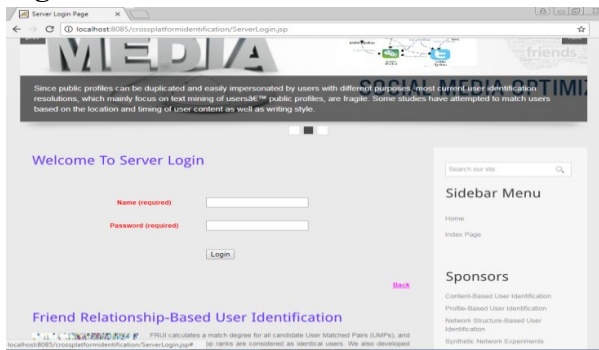


Fig 3: Server Login Page.



Fig 4: User Login Page.

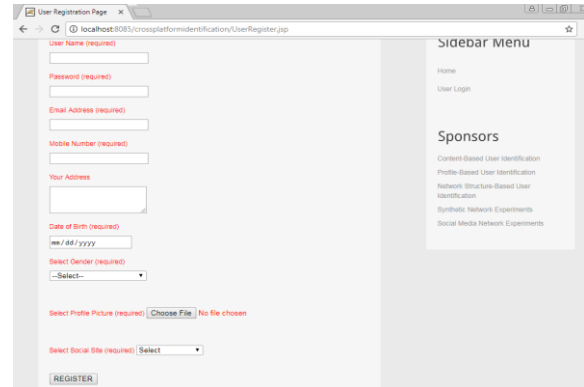


Fig 5: User Registration Page.

5.CONCLUSION

This project self-tended to the inconvenience of purchaser character transversely SMN systems associated gave a propelled willpower. As a key trouble of SMN, association lifestyles systems is of growing accent and encourages de-anonymization character persona responsibilities. Along these lines, we have a tendency to set up a good internet-work shape-based totally consumer character determination. We generally tend to aswell build up an eccentric partner pursuing essentially based equation charged FRUI. To propel the capability of FRUI, we generally tend to de-scribed hints and self-tended to the nice. In the longer term, we generally tend to outright our association of hints in every green, and accomplished ample bigger than NS, completely the nation of-paintings of the artwork association form-based totally person recognizable proof outcome. In effects, if crude competition abstracts are skinny, insufficient, or more difficult to ask proper of passage because of

loss of approachability settings, FRUI is ok for pass-stage duties. Consequences of our empiric edited compositions archived that web work lifestyles systems will harvest fundamental purchaser character work. Our FRUI set of standards is apparent, through and by using conservative, and carried out gigantic bigger than NS, absolutely the dominion-of-paintings of artwork course of motion shape-based all customer persona reply. In inevitabilities, if crude substance abstracts are slight, insufficient, or tougher to get to inferable from secrecy settings, FRUI is intensely appropriate for move-level obligations.

6. REFERENCE

- [1] B. Zhou and J. Pei, "Preserving privacy in social networks against neighborhood attacks," Proc. Of the 24th IEEE International Conference on Data Engineering (ICDE'08), pp.506–515, 2008.
- [2] X. Kong, J. Zhang, and P.S. Yu, "Inferring anchor links across multiple heterogeneous social networks," Proc. of the 22nd ACM International Conf. on Information and Knowledge Management (CIKM'13), pp. 179-188, 2013.
- [3] R. Zafarani and H. Liu, "Connecting corresponding identities across communities," Proc. of the 3rd International ICWSM Conference, pp. 354-357, 2009.
- [4] P. Jain, P. Kumaraguru, and A. Joshi, "@ i seek 'fb. me': identifying users across multiple online social networks," Proc. of the 22nd International Conference on World Wide Web Companion, pp. 1259-1268, 2013.
- [5] M. Almishari and G. Tsudik, "Exploring linkability of user reviews," Computer Security—ESORICS 2012 (ESORICS'12), pp. 307-324, 2012.
- [6] P. Jain and P. Kumaraguru, "Finding Nemo: searching and resolving identities of users across online social networks," arXiv preprint arXiv:1212.6147, 2012.
- [7] O. De Vel, A. Anderson, M. Corney, and G. Mohay, "Mining email content for author identification forensics," ACM Sigmod Record, vol. 30, no. 4, pp. 55-64, 2001.
- [8] R. Zafarani and H. Liu, "Connecting users across social media sites: a behavioral-modeling approach," Proc. of the 19th ACM SIGKDD International Conference on Knowledge Discovery and Data Mining (KDD'13), pp.41-49, 2013.
- [9] N. Korula and S. Lattanzi, "An efficient reconciliation algorithm for social networks," arXiv preprint arXiv:1307.1690, 2013.
- [10] E. Raad, R. Chbeir, and A. Dipanda, "User profile matching in social networks," Proc. Of the 13th International Conference on Network-Based

Information Systems(NBiS'10), pp.297-304, 2010.



P.SILPA Pursuing Master's Degree in Department of Computer Science in Swarna Bharathi Institute of Science and Technology, Khammam. I obtained my Bachelor's Degree in Computer Science and Engineering from Swarna Bharathi Institute of Science and Technology affiliated to JNTUH in 2014.



MR.V.SRIKANTH, working as an Assistant Professor in Department of Computer Science

and Engineering in Swarna Bharathi Institute of Science and Technology (SBIT), Khammam. He received Master's Degree (M.Tech) from SBIT College, Khammam, affiliated to JNTUH in 2013.



DR.CH.N.SANTHOSH KUMAR is Head of the Department & Professor in Dept. of C.S.E, Swarna Bharathi Institute of Science and Technology (SBIT), Khammam. He received the Master's Degree (M.Sc) from Sidhartha College, Vijayawada, Nagarjuna University 2000. M.Tech from Jaipur University, Udaipur 2005. He Completed his Ph.D from JNTUH, Hyderabad, 2016. His research interest includes Datamining, Data Processing, Artificial Interest, and Data patterning.