

Degin of PPA-B.K Adder For Fast Computing

Kistam .Balaji & Venkate Narayana .Eluri

Kistam. Balaji, M-Tech (VLSI), ECE Department KKR&KSR institute of technology & science, JNTUK A.P

Venkate Narayana. Eluri M-Tech, ECE Department KKR&KSR institute of technology & science, JNTUK A.P

ABSTRACT

In this paper, the design an residue number system reverse converters based on Brent Kung adders is analyzed. The parallel prefix adder provides high speed and reduced delay arithmetic operations such as addition multiplication but it is not widely used since it suffers from high power consumption and high area on chip. Hence, a Brent Kung adder component is presented to perform fast modulo addition in Residue Number System reverse conversion. The proposed components are not only results in fast arithmetic operation and it also highly reduced the hardware density since it requires fewer amount of logic gates. In this work, the proposed components are implemented in different moduli sets reverse converter designs and the performances are compared for different values of n .

KEYWORDS: Digital arithmetic, Brent kung adder, parallel-prefix adder, residue number system (RNS), reverse converter.

INTRODUCTION

The Residue Number System plays a significant role in the battery based and portable devices because of its low power features and its competitive delay. The Residue number system reverse converter is designed with parallel prefix addition by using new components methodology for higher speed operation. The RNS consists of two main components forward and the reverse converter that are integrated with the existing digital system. The forward converter performs the operation of converting the binary number to the modulo number whereas the reverse converter performs the operation of reverse converting the modulo number to the binary number which is the hard and time consuming

process compared with the forward converter. The fundamental RNS concepts such as

1)RNS definition with properties and their applications,2)consideration of modulo set selection,3)design of forward converter,4)moduloarithmetic units,5)design of reverse converter are discussed.

The voltage over scaling (VOS) technique is applied to the residue number system to achieve high energy efficiency. The VOS technique introduces soft errors which degrades the performance of the system. To overcome these soft errors a new technique is implemented called joint RNS-RPR (JRR) which is the combination of RNS and the reduced precision redundancy. This method provides the advantage of satisfying the basic properties of RNS includes shorter critical path, reduced complexity and low power. New architectures are presented for the moduli set $(2n-1, 2n, 2n+1)$ for the conversion from the residue to the binary equivalents. Here the speed and the cost are major concern.

Distributed arithmetic principles are used to perform the inner product computation. The input data which are in the residue domain which are encoded using the Thermometer code format and the outputs are encoded using the one hot code format. Compared to the conventional method which used Binary code format, the proposed system which achieves higher operating speed. The residue number system which provides carry free addition and fully arithmetic operation, for several applications such as digital signal processing and cryptography.

In this brief, we present a comprehensive method which uses the parallel prefix adder in selected position, thereby using the shift operation on one bit left to design a multiplier on the same design module to achieve a fast reverse converter design.

The usage on parallel prefix structure in the design leads to higher speed in operation meanwhile it increases the area and power consumption. In order to compensate the tradeoff between the speed, area and power consumption, a novel specific Brent Kung parallel prefix based adder components are used to design the reverse converter. These Brent Kung design which provides the significant reduction in the power delay product (PDP) metric and leads to considerable improvements in the area time² product (AT²) in comparison with the traditional converters without using parallel prefix adders.

PARALLEL PREFIX STRUCTURE

A. Parallel Prefix Block.

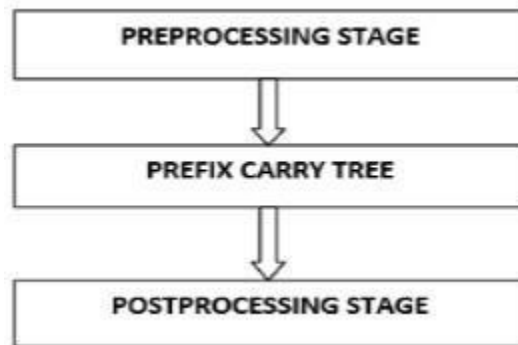


Fig.1 Basic Parallel prefix structure

The Parallel prefix structure consists of three main blocks, they are preprocessing block, prefix carry tree and post processing block. The parallel prefix adder operation begins with preprocessing stage by generating the Generate (G_i) and Propagate (P_i) equation [1] & [3]. The prefix carry tree gets proceeded with the previous block signal to yield all carry bit signal and these stage contains three logic complex

The Residue number system mainly composed of three main parts such as, forward converter, modulo arithmetic units and reverse converter. On comparing with the other parts the reverse converter design is a complex and no modular structure. So more attention is needed in designing the reverse converter thereby preventing the slow operation and compromises the benefits of the RNS. The parallel prefix structure helps to achieve the faster operation in the reverse converter design but causes increased power consumption. In the existing system the novel specific Brent Kung parallel prefix adder based components are used to replace the existing components there by reducing the power consumption and getting faster operation.

cells such as Black cell, Gray cell and Buffer cell. Black cell compute both the propagate (P_(i,j)) and generate (G_(i,j)) by using the equation [3] & [4]. The Gray cell executes only the generate (G_(i,j)). The carry bits generated in the second stage get passed to the post processing block thereby generating the sum using the equation [5]. The block diagram is shown in the Fig 1.

$$G_{m:n} = A_n \text{ AND } B_n \quad (1)$$

$$G_0 = C_{in} \quad (2)$$

$$P_{m:n} = A_n \text{ XOR } B_n \quad (3)$$

$$P_0 = 0 \quad (4)$$

$$G_{m:n} = G_{n:k} \text{ OR } P_{n:k} \text{ AND } G_{k-1:n} \quad (5)$$

$$P_{m:n} = P_{n:k} \text{ AND } P_{k-1:j} \quad (6)$$

$$S_n = P_n \text{ XOR } C_{in} \quad (7)$$

The Brent Kung adder prefix structure:

It is employed to achieve the higher speed with reduced power consumption. On comparing with the other parallel prefix adder structure the BK adder is chosen mainly for minimum fan-out and should be higher speed in operation than others. Fig.2 shows the

example BK adder prefix structure which uses the three basic cells in the prefix structure. These structure is elaborated for the proposed design having the modulo addition of $(4n+1)$ for $n=5$.

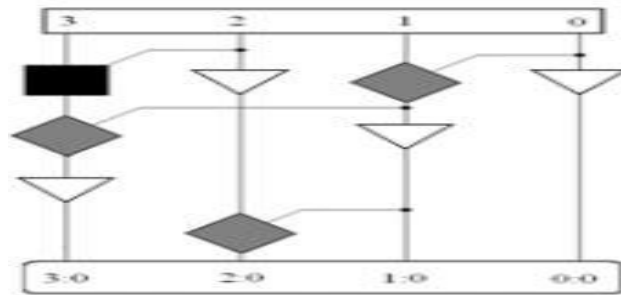


Fig.2:4-bit BK adder prefix structure

B.HRPX Structure :(Brent Kung Regular Parallel prefix XOR/OR adder component)

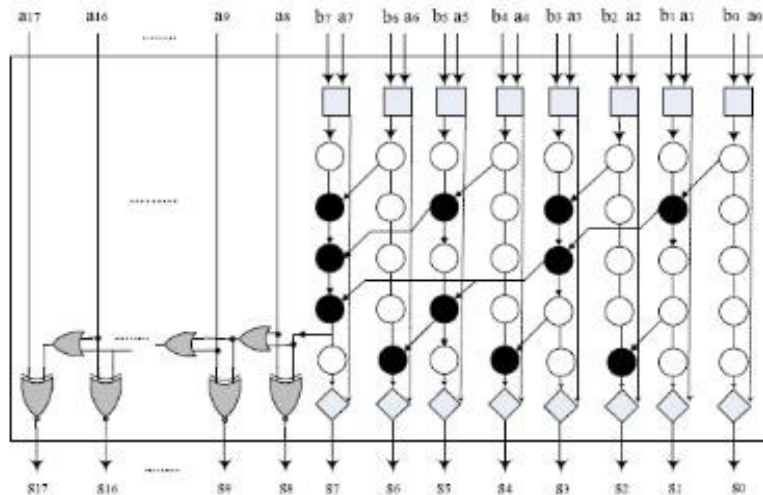


Fig.3 HRPX Structure using BK prefix network

Fig.3 shows HRPX Structure. The regular parallel prefix adder is used to do the first part of addition and the simplified RCA logic is used to do the second part where the corresponding bits of the operand are fully variable. Full adder can be designed with XOR/OR gates because of the constant operand. In these reverse converters design the carry chain is not needed and can be ignored. For most modulo sets (2^n-1) addition is a necessary operation. The End around Carry (EAC) for (2^n-1) addition is represented with two zero, but for the reverse converter design one zero representation is required. To correct these zero representation problem, a detector circuit was employed in the design but it

incorporates additional delay. So, the Binary to excess one converter (BEC) is used to solve the double zero representation issue.

NEW PARALLEL-PREFIX-BASED COMPONENTS

The HMPE Structure consists of two parts: Regular prefix adder and the Modified Excess One unit. The first two operands are added using the parallel prefix adder and the result is conditionally incremented based on the control signal generated by the prefix structure to assure the single zero representation. The below figure shows HMPE Structure.

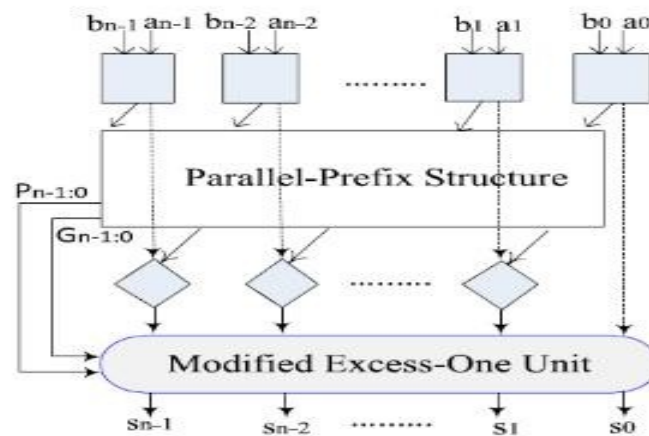


Fig.4: HMPE Structure

Modified Excess One unit Description

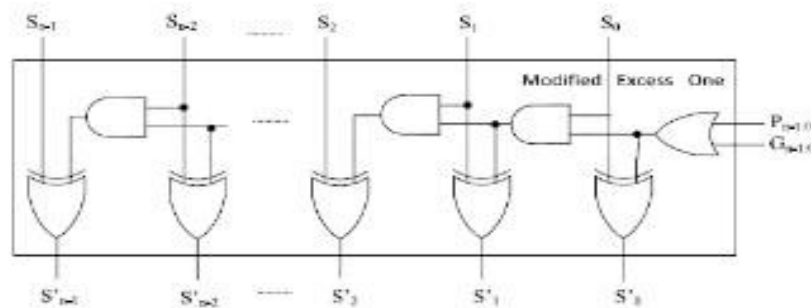


Fig.5: Modified Excess one unit

Fig.5 shows the Modified Excess One unit circuit diagram. The result generated by the prefix structure is conditionally incremented by this unit based on the control signal generated by the parallel prefix adder.

The reverse converter design is implemented for $(4n+1)$ modulo addition ($n=5$) designing the adder and also the multiplier by using the same adder design without using any parallel prefix multiplier structure for designing multiplier.

In this design, the adder design is implemented by using the Kogge Stone adder parallel prefix structure. Here the first two operands are added by using the prefix adder preprocessing stage thereby generating the propagate and generate equation. The first stage processed signal get passed to the next stage called the prefix carry tree, this stage again computes the generate and propagate equation by using the previous output and all the logic cells employed in the Kogge Stone adder network. These processed signals are passed to the post processing block.

REVERSE CONVERTER DESIGN METHODOLOGY

In this section, the methodology of reverse converter design is described. In the following, a method employing distinct components in the architecture of the reverse converter will be presented. Several reverse converters for different moduli sets have been introduced, which can be classified into three classes. The first class consists of converters with a tree of CSAs with EAC followed by a two-operand modulo $2k - 1$ CPA. A second class includes more complex reverse converters, which have several CSAs and CPAs with EACs followed by a final regular subtractor with two operands of different size. The implementation of this subtractor using regular binary-adder results in one operand with some constant bits. The third class covers the reverse converters that have been designed for moduli sets with moduli other than the popular $2n$ and $2n \pm 1$. In the following, we describe a methodology for designing reverse converters in the first and second classes. The suggested method for applying the HMPE and HRPX in the reverse converter is shown in Fig.6.

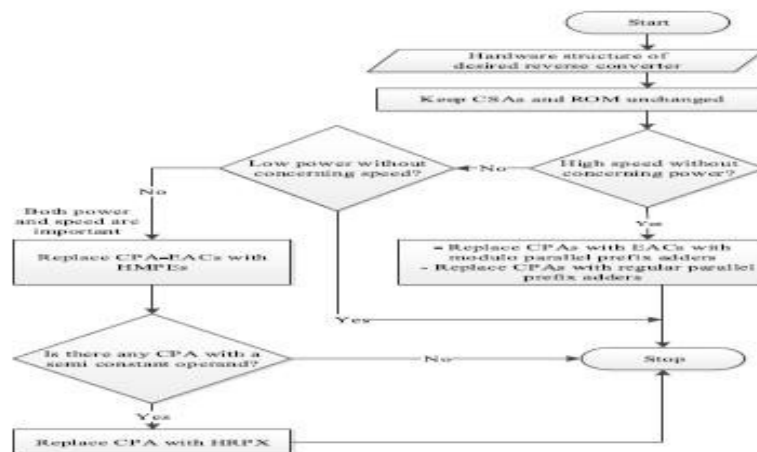


Fig.6: Reverse converter design methodology

If it is just important to achieve the least power consumption and hardware cost without considering speed, no prefix adder is needed. On the other hand, if high speed is the designer goal, the CPAs with EAC and the regular CPAs should be replaced by traditional parallel prefix modulo $2n - 1$ adders and regular parallel-prefix adders, respectively. However, for the VLSI designers, a

suitable tradeoff between speed, power, and area is often more important. In this case, first, CPAs with the EAC can be replaced by the HMPEs. Then, if the converter contains a regular CPA where one of its operands has a string of constant bits with the value of one, it can be replaced with the HRPX.

The simulation process has been carried out for different levels of abstraction. The code has been written in Verilog hardware description language. The top module has been synthesized and simulated in Xilinx ISE Design Suite 12.3 and the corresponding delay calculations have been noted.

By using Kogge Stone Adder the delay and area was reduced.

Simulation results are shown in fig 7 and 8. RTL Schematic diagrams are shown in fig 9 and 10. The design was implemented in Spartan-3E kit.



Fig.7: Simulation result of HMPE-BK Adder Parallel Prefix Structure

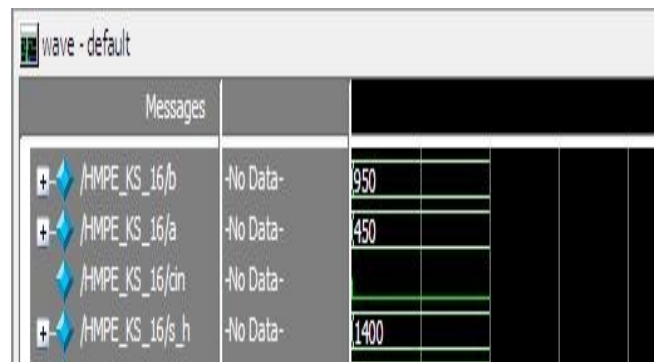


Fig.8: Simulation Result of HMPE-KS Adder Parallel Prefix Structure

5.2: RTL (Register Transfer Level) schematic diagrams:

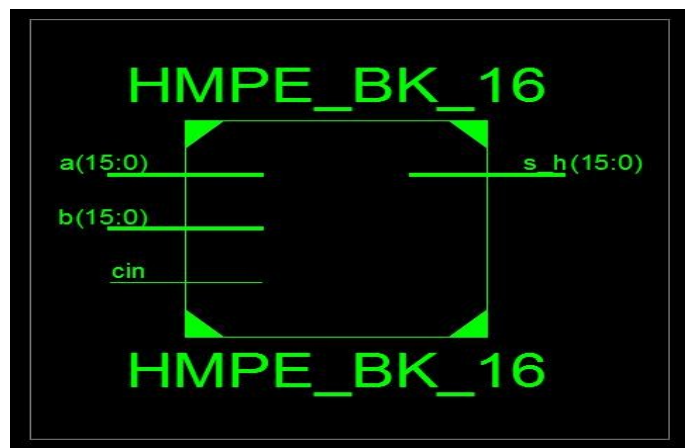


Fig.9: RTL Schematic of HMPE- BK Adder Parallel Prefix Structure

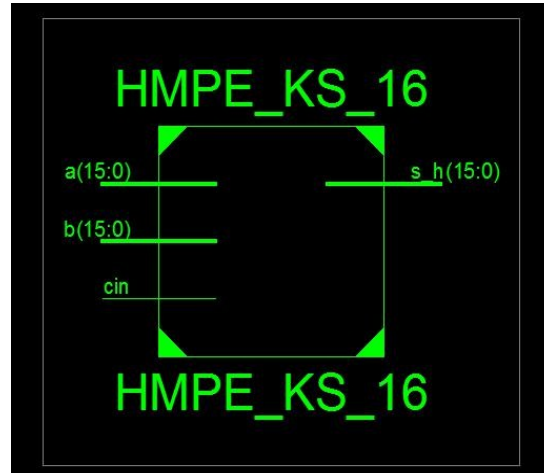


Fig.10: RTL Schematic of HMPE- KS Adder Parallel Prefix Structure

5.3: Synthesize Result:

Table shows the synthesise result for using Xilinx project navigator for device xc3s400-4pq208

Table Synthesize result

| | HMPE-BK | HMPE-KS |
|-----------|---------|---------|
| DELAY(ns) | 31.83 | 29.02 |
| POWER(mW) | 56 | 56 |

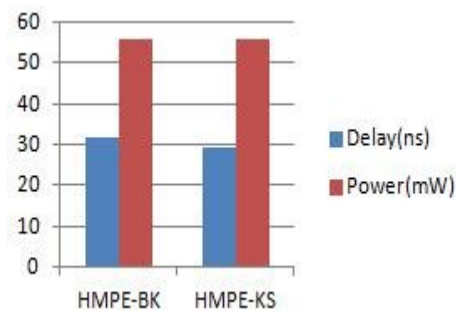


Fig.11: performance and power trade-off of different system

ADVANTAGES

- Low power consumption.
- Delay and Area Low.

- Pseudorandom number.

APPLICATIONS

- Digital signal processing and cryptography.

CONCLUSION



This proposed work presents Brent Kung based adder components that give better tradeoff in area and delay are thus exhibited to design reverse converters. A methodology is described to design reverse converters depending on various types of prefix adders. These components are particularly designed for reverse converters. Implementation results gives that the reverse converters depending on the suggested work significantly decreases the area and delay when contrasted and the original converters, which don't utilize any parallel-prefix adders. Future work includes the extension of the bit size and to construct an efficient reverse converter.

REFERENCES

- [1] Omondi and B. Premkumar, Residue Number Systems: Theory and Implementations. London, U.K.: Imperial College Press, 2007.
- [2] B. Parhami, Computer Arithmetic: Algorithms and Hardware Designs, 2nd ed., New York, NY, USA: Oxford Univ. Press, 2010.
- [3] J. Chen and J. Hu, "Energy-efficient digital signal processing via voltageover scaling-based residue number system," IEEE Trans. Very Large Scale Integr. (VLSI) Syst., vol. 21, no. 7, pp. 1322–1332, Jul. 2013.
- [4] C. H. Vun, A. B. Premkumar, and W. Zhang, "A new RNS based DA approach for inner product computation," IEEE Trans. Circuits Syst. I, Reg. Papers, vol. 60, no. 8, pp. 2139–2152, Aug. 2013.
- [5] S. Antão and L. Sousa, "The CRNS framework and its application to programmable and reconfigurable cryptography," ACM Trans. Archit. Code Optim., vol. 9, no. 4, p. 33, Jan. 2013.
- [6] A. S. Molahosseini, S. Sorouri, and A. A. E. Zarandi, "Research challenges in next-generation residue number system architectures," in Proc. IEEE Int. Conf. Comput. Sci. Educ., Jul. 2012, pp. 1658–1661.