

Saliency Detection Framework Using Low Level Multi Scale Image Features Based on Wavelet Transformation Technique

¹S.Muralikrishna & ²K.Vinoda

1. PROFESSOR, Bomma Institute of Technology and Science, Allipuram, Khammam, Telengana, INDIA – 507318
2. M.Tech, Bomma Institute of Technology and Science, Allipuram, Khammam, Telengana, INDIA – 507318

Abstract-

Stationary wavelet transform (SWT) achieves translation-invariance by avoiding down sampling, resulting in giving lossless information. In this paper, SWT technique is implemented for creating local and global saliency maps. The performance of the saliency detection method using low level features based on Discrete wavelet Transform (DWT) and SWT are analyzed for biomedical applications. The results are also extended for a hybridized saliency map. Finally the simulation results are analyzed and compared using different parameters for local, global and hybrid saliency detection models.

Keywords – SWT; local map; global map; hybrid map

INTRODUCTION

The Visual attention is one of the main features of the Human Visual System (HVS) to derive important and compact information from the natural scenes according to Treisman et al [1], and. Koch et al [2], where the surrounding environment includes an excessive amount of information, visual attention mechanism enables a reduction of the redundant data which benefits perception during the selective attention process [1-4]. Many studies have tried to build computational models to simulate this mechanism [5-6]. Recently, the Wavelet transform (WT) has begun to attract researchers' effort in visual attention modeling [11-12]. The advantage of the WT is its ability to provide multi-scale spatial and frequency analysis at the same time [18]. Tian et al., [11] proposed a WT-based salient detector for image retrieval which depends on local and global variations of wavelet coefficients at multi-scale levels. The idea is to account for both global and local features in the WT space: the points with higher global variation based on

the absolute wavelet coefficients at coarser scales are selected, and these selected points are tracked along the finer scales to detect the salient points [11]. The salient points will be the sum of the wavelet coefficients at tracked points along the multi-scale WT [11]. but, this algorithm is only able to give salient points rather than salient regions compared to the models [7], [14] and [16]. Then, even though salient points tracked at the finest resolution of the WT can represent the image for image retrieval [11], it is hard to compare this algorithm for attention region or object detection as a computational model of saliency detection. Murray et al., [12] derived weight maps from the high-pass wavelet coefficients of each level based on the WT decomposition. Two important aspects for the derivation of weight maps are the consideration of the human sensitivity to local contrast, and the energy ratio of central and surrounding regions to mimic the center-surround effect [12]. In [12], the saliency map is obtained by the inverse WT (IWT) of weight maps for each



color sub-band [12]. While WT representation is better than FT for images by providing more local analysis, there is lack of accounting for global contrast because the computation is based on the local differences in [12]. Thus, the local contrast is more dominant than the global contrast in the saliency model of [12].

WAVELET TRANSFORMATIONS

Wavelet Transformation based applications are growing rapidly in engineering fields such as signal denoising, compression, enhancement, video coding and pattern classification etc. The multi-scale wavelet analysis the signal at different band and bandwidths [18-19],[22-23] which helps in performing local frequency analysis. Wavelet analysis applies multiresolution filter-banks to the input signal according to Merry at el [18] and John et al [23], where the approximation and detailed signals are derived from two frequency bands; high pass and low pass respectively from the orthogonal wavelet filter-band property[18],[19],[23]. Frequency components can be simply expressed as 1- D data (for the three-level wavelet decomposition). The authors used wavelet decomposition technique which extracts oriented details(horizontal, vertical, and diagonal)in the multi-scale perspective and low special resolution with lower frequency components and high spatial resolution with high frequency components without losing the information in details during the process[18],[23]. Many techniques are implemented using wavelet transforms, two such techniques are discrete wavelet transforms and stationary wavelet transforms. A. Discrete wavelet transform(DWT) DWT is an implementation of the wavelet transform which uses a discrete set of the wavelet scales and some defined rules, this technique is used in various fields including image processing, when it is applied to an image, the input image is decomposed into different sub-bands namely

low-low (LL),low-high(LH),high-low(HL),highhigh(HH).DWT has the ability to preserve high frequency components of the image. B. Stationary Wavelet Transform (SWT) SWT is similar to DWT except for the down sampling that are present in the process of DWT are suppressed to overcome the loss of information in the respective bands providing time invariance and high frequency band components of the image. In this paper we study the SWT technique application on the algorithm and analysis the SWT technique by comparing the measuring parameters to DWT technique. In order to analysis a saliency maps, feature maps are first generated. They are generated as follows. III. Feature Map An image is converted to the CIE lab color space(CIE illumination D65 model is selected for conversion as the white-point parameter in Matlab® rgb to CIE Lab converter) which makes the image uniform and similar to the human perception, with a luminance and two-chromatic channels (RG and BY) [9]. An $m \times m$ 2D Gaussian low-pass filter to the input color image g_c is applied to remove noise. $g_{IC} = g_c * I_{m \times m}$ (1) g_{IC} is the new noise removed version of the input image, where I is $m \times m$ 2-D filter with size 3 i.e $m=3$ to filter high frequency noise. Daubechies wavelets (Daub.5) are used since its filter size is approximate for computation time and neighbourhoods.

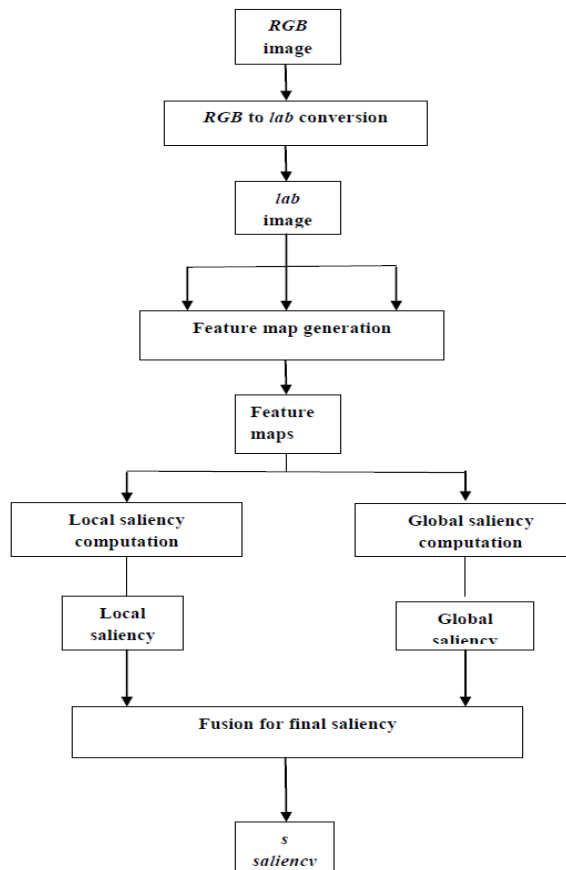


Fig1. The framework of the saliency detection

$$[A_N^s, H_c^s, V_c^s, D_c^s] = \text{SWT}_N(g^{lc}) \quad (2)$$

By using SWT the image is decomposed into N number of scaling in the process, $s \in 1, \dots, N$ is the resolution index and $c \in L$, a, b represents the channels of g^{lc} . $A_N^s, H_c^s, V_c^s, D_c^s$ are the wavelet coefficients of approximation, horizontal, vertical and diagonal details for the given s and c respectively. The details of the image are represented by the wavelet coefficients. By increasing frequency bands several feature maps are created at various scales. Inverse stationary wavelet transform (ISWT) is used to generate the feature maps. Since the Gaussian filter is applied, feature maps are generated from the details of SWT process by ignoring approximation details during the ISWT process.

Saliency Detection Saliency detection is a process by which a selective region stands out relative to its surrounding neighbors. Where a saliency map is a two dimensional map which exhibits the striking regions to be more prominent in the visual field, which helps in enquiring the important data right away allowing reduction of data in the process and the prioritized selection improves the performance in generating or transmitting visual data. A. Computation of local features According to Itti et al [11] feature maps at each level are fused linearly without any normalization operation to generate local saliency, as the formula is given in (4) below. Hence, this saliency map will be created based on the local features computed in equation (3) in which the maximum value between channels of the image is taken into account at each level

Conclusion:

In this paper the authors tried to analyze the performance of a hybridized saliency map by using the stationary wavelet transform (SWT) technique. The generated results show that SWT is better when compared to DWT for local, global, final hybridized saliency maps. SWT technique provides a better performance when compared to the previous models. Authors propose hybridized saliency map for medical applications.

REFERENCE

- [1] A. Treisman and G. Gelade, "A feature integration theory of attention," *Cognit. Psychol.*, vol. 12, no. 1, pp. 97–136, 1980.
- [2] C. Koch and S. Ullman, "Shifts in selective visual attention: Towards the underlying neural circuitry," *Human Neurobiol.*, vol. 4, pp. 219–227, 1985.



- [3] J. Wolfe, K. R. Cave, and S. L. Franzel, "Guided search: An alternative to the feature integration model for visual search," *J. Exp. Psychol.: Human Percept. Perform.*, vol. 15, no. 3, pp. 419–433, 1989.
- [4] J. Wolfe, "Guided search 2.0: A revised model of guided search," *Psychonomic Bull. Rev.*, vol. 1, no. 2, pp. 202–238, 1994.
- [5] J. K. Tsotsos, S. M. Culhane, W. Y. K. Wai, Y. H. Lai, N. Davis, and F. Nuflo, "Modelling visual attention via selective tuning," *Artif. Intell.*, vol. 78, no. 1–2, pp. 507–545, Oct. 1995.
- [6] E. Niebur and C. Koch, "Computational Architectures for Attention," in *The Attentive Brain*, R. Parasuraman, Ed. Cambridge, MA: MIT Press, 1998, pp. 163–186.
- [7] J.M. Wolfe, S. J. Butcher, and M. Hyle, "Changing your mind: On the contributions of top-down and bottom-up guidance in visual search for feature singletons," *J. Exp. Psychol. Human Percept Perform.*, vol. 29, pp. 483–502, 2003.
- [8] O. L. Meur, P. L. Callet, D. Barba, and D. Thoreau, "A coherent computational approach to model the bottom-up visual attention," *IEEE Trans. Pattern Anal. Mach. Intell.*, vol. 28, no. 5, pp. 802–817, May 2006.
- [9] S. Frintrop, "VOCUS: A visual attention system for object detection and goal directed search," Ph.D. dissertation, Rheinische Friedrich-Wilhelms-Universität Bonn, Bonn, Germany, 2005.
- [10] L. Itti, "Models of bottom-up and top-down visual attention," Ph.D. dissertation,
- Dept. Computat. Neur. Syst., California Inst. Technol, Pasadena, 2000.