

# Power Quality Improvement in Grid Connected System with Fuzzy Logic Controller At Distribution Level

Kongari Ramesh

M-tech student Scholar

Department of Electrical & Electronics Engineering,

DVR Engineering College, KANDI;

MEDAK(Dt); Telangana, India.

Email:kr541612@gmail.com

K.Prashant

HOD

Department of Electrical & Electronics Engineering,

DVR Engineering College, KANDI;

MEDAK (Dt); Telangana, India.

Email:kuna.prashant07@gmail.com

**Abstract**— The depletion of the fossil fuel resources and the global warming effects has led the world to think seriously of other alternative sources of energy. So renewable energy resources (RES) are being connected to the distribution systems, mostly done by using power electronic converters. But use of power electronic converters and non-linear loads like at distribution level injects harmonics, which intern cause power quality problems. Distribution static compensator (DSTATCOM) is very popular in compensating power problems for nonlinear and unbalanced loads. Any change in the load affects the DC-link voltage (DCLV) directly. Conventionally, a PI controller is used to maintain the DCLV to the reference value, but its transient response is poor. So, fuzzy logic controller is proposed which shows better dynamic response. To trigger inverter HCC is used. The proposed inverter with the control when connected to wind energy, helps the 3-phase 4-wire linear/non-linear unbalanced load at point of common coupling appear as balanced linear load to the grid. With MATLAB/Simulink simulation studies, the proposed control technique is demonstrated and evaluated here.

**Key Words** - distributed generation (DG), distribution system, grid interconnection, power quality (PQ), renewable energy, Point of common coupling (PCC).

## I. INTRODUCTION

Utilization of electrical energy indicates the standard of living of country. In Developing countries like India the economy of a country solely depends on industrialization, which in turn require bulk amount of electrical energy. Also, irrigation, domestic and commercial sectors require bulk amount of electrical energy. Since, electrical energy is Superior compared to other energy forms because it can be generated in bulk amount, transmitted to longer distances and converted to any other form easily, flexible control and cheap. Most of electrical energy demand is supplied by conventional sources like coal, petroleum and gas which are non-renewable and exhaust after some decades. In India around 70% of electrical energy is from coal which is diminishing and also it is producing lot of pollution which in turn causes globalization. So, this is an important issue which has motivated nations across the world to think about alternative forms of energy which utilize inexhaustible and environmentally friendly natural resources like solar, wind and tidal energies. But these sources can't be generated in huge amounts.

So small Distributed Generation (DG) units including both renewable and non renewable sources, That is integration of renewable energy systems (RESS) in smart grids (SGs) is a challenging task, mainly due to the intermittent and unpredictable nature of the sources

typically wind or sun. So for the reliable operation of the system, continuous control is needed that is power quality (PQ) is major concern in supplying electrical energy to the customers.

Electric Power quality is a term which has captured increasing attention in power engineering in the recent years. Even though this subject has always been of interest to power engineers, it has assumed considerable interest in the 1990's. Electric power quality means different things for different people. To most electric power engineers, the term refers to a certain sufficiently high grade of electric service but beyond that there is no universal agreement. The measure of power quality depends upon the needs of the equipment that is being supplied. What is good power quality for an electric motor may not be good enough for a personal computer.

## II.SCOPE AND MITIGATION OF PQ PROBLEMS

Usually the term power quality refers to maintaining a sinusoidal waveform of bus voltages at rated voltage and frequency. Otherwise PQ Problems like voltage flickers, poor power factor and harmonics are occurred. These problems are due to large amount of induction motors, adjustable speed drives, Switching Power supplies, Arc furnaces, Non- linear loads and power electronic devices used in DG Systems. The characteristics of load have become more complex due to the increased use of power electronic equipment, which results in a deviation of voltage and current from its sinusoidal waveform.

Also, the restructuring of power systems and with shifting trend towards distributed generation and deregulation, the issue of power quality is going to take newer dimensions. In developing countries, Where the variation of power frequency and many such other determinates of power quality are themselves a serious question, it is very vital to take positive steps in this direction.

The next 25 years will present both technical and business opportunity challenges to utilities in their distribution of electrical energy. The evolving nature of distribution system operations and end-use equipment performance presents a mixed bag of tasks that will need to be well executed for utilities to succeed in the new highly competitive marketplace. A growing number of loads are sensitive to customer's critical processes, which have costly consequences if disturbed by poor power quality. Industries are very sensitive to PQ problems. So, for all types of power quality solutions at the transmission & also in distribution system voltage level FACTS also called as Custom



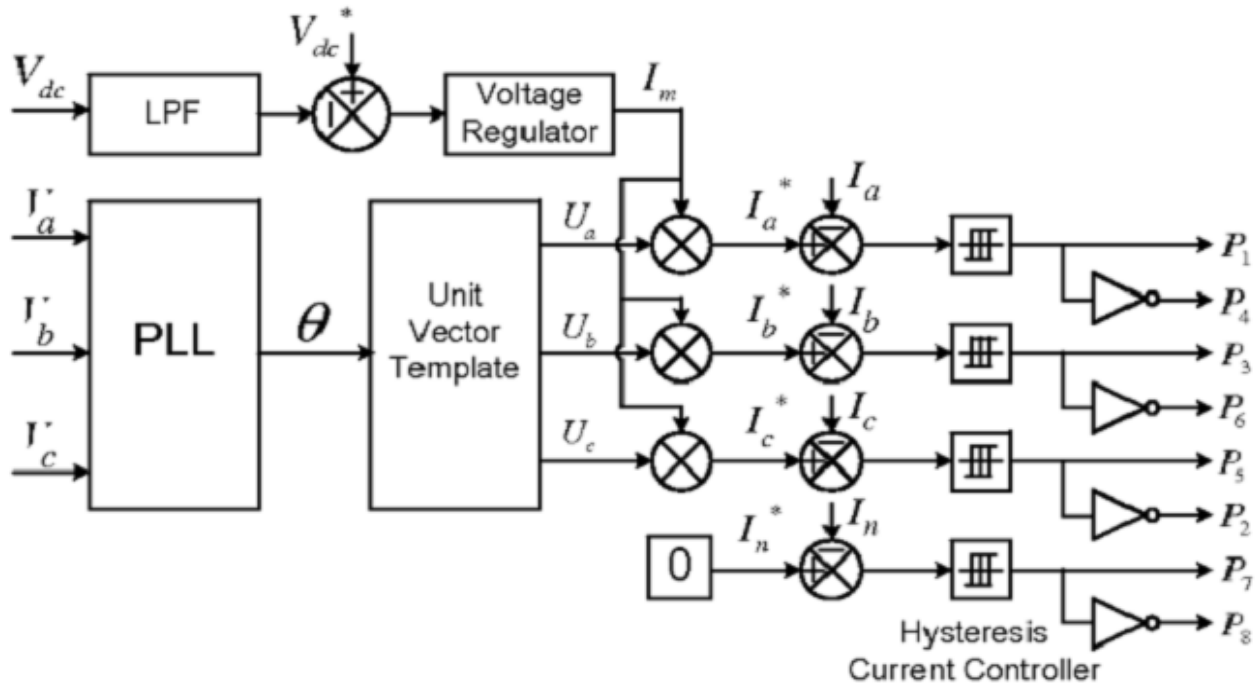


Fig. 2. Block Diagram Representation of Grid-Interfacing Inverter Control.

The exchange of active power in between renewable source and grid can be obtained from the regulation of dc-link voltage. Thus the output of dc-link voltage regulator results in an active current ( $I_m$ ). The multiplication of this active current component ( $I_m$ ) with unity grid voltage vector templates ( $U_a, U_b$ , and  $U_c$ ) generates the reference grid currents ( $I_a^*, I_b^*$ , and  $I_c^*$ ) for the control process. The reference grid neutral current ( $I_n^*$ ) is set to zero, being the instantaneous sum of balanced grid currents. Phase locked loop (PLL) is used to generate unity vector template from which the grid synchronizing angle ( $\theta$ ) is obtained.

$$U_A = \sin \theta \quad (1)$$

$$U_A = \sin\left(\theta - \frac{2\pi}{3}\right) \quad (2)$$

$$U_A = \sin\left(\theta + \frac{2\pi}{3}\right) \quad (3)$$

The actual dc-link voltage ( $V_{DC}$ ) is sensed and passed through a first-order low pass filter (LPF) to eliminate the presence of switching ripples on the dc link voltage and in the generated reference current signals. The difference of this filtered dc-link voltage and reference dc-link voltage ( $V_{DC}^*$ ) is given to a discrete-PI regulator to maintain a constant dc-link voltage under varying generation and load conditions.

The dc-link voltage error  $V_{DCerr}(N)$  at  $n$ th sampling instant is given as:

$$V_{DCerr}(N) = V_{DC(N)}^* - V_{DC(N)} \quad (4)$$

The output of discrete-PI regulator at  $n$ th sampling instant is expressed as

$$I_{m(N)} = I_{m(N-1)} + K_{PVdc} (V_{DC(N)} - V_{DC(N-1)}) + K_{IVdc} V_{DCerr}(N) \quad (5)$$

Where  $K_{PVdc}$  and  $K_{IVdc}$  are proportional and integral gains of dc-voltage regulator. The instantaneous values of reference three phase grid currents are computed as

$$I_A^* = I_m \cdot U_A \quad (6)$$

$$I_B^* = I_m \cdot U_B \quad (7)$$

$$I_C^* = I_m \cdot U_C \quad (8)$$

The neutral current, present if any, due to the loads connected to the neutral conductor should be compensated by forth leg of grid-interfacing inverter and thus should not be drawn from the grid. In other words, the reference current for the grid neutral current is considered as zero and can be expressed as:

$$I_N^* = 0 \quad (8)$$

The reference grid currents ( $I_A^*$ ,  $I_B^*$ ,  $I_C^*$  and  $I_N$ ) are compared with actual grid currents ( $I_A$ ,  $I_B$ ,  $I_C$  and  $I_N$ ) to compute the current errors as:

$$I_{Aerr} = I_A^* - I_A \quad (9)$$

$$I_{Berr} = I_B^* - I_B \quad (10)$$

$$I_{Cerr} = I_C^* - I_C \quad (11)$$

$$I_{Nerr} = I_N^* - I_N \quad (12)$$

These current errors are given to hysteresis current controller. The hysteresis controller then generates the switching pulses (P1, P2, P3, P4, P5, P6, P7, and P8) for the gate drives of grid-interfacing inverter.

The switching pattern of each IGBT inside inverter can be formulated on the basis of error between actual and reference current of inverter, which can be explained as:

If  $I_{InvA} < (I_{InvA}^* - h_B)$ , then upper switch will be OFF (P1=0) and lower switch S4 will be ON (P4=1) in the phase "A" leg of inverter.

If  $I_{InvA} > (I_{InvA}^* + h_B)$ , then upper switch will be ON (P1=1) and lower switch S4 will be OFF (P4=0) in the phase "a" leg of inverter.

Where  $h_b$  is the width of hysteresis band. Similarly switching pulses are derived for other three leg.

## V. INTRODUCTION TO FUZZY LOGIC CONTROLLER

A new language was developed to describe the fuzzy properties of reality, which are very difficult and sometime even impossible to be described using conventional methods. Fuzzy set theory has been widely used in the control area with some application to dc-to-dc converter system. A simple fuzzy logic control is built up by a group of rules based on the human knowledge of system behavior. Matlab/Simulink simulation model is built to study the dynamic behavior of dc-to-dc converter and performance of proposed controllers. Furthermore, design of fuzzy logic controller can provide desirable both small signal and large signal dynamic performance at same time, which is not possible with linear control technique. Thus, fuzzy logic controller has been potential ability to improve the robustness of dc-to-dc converters. The basic scheme of a fuzzy logic controller is shown in Fig 5 and consists of four principal components such as: a fuzzy fication interface, which converts input data into suitable linguistic values; a knowledge base, which consists of a data base with the necessary linguistic

definitions and the control rule set; a decision-making logic which, simulating a human decision process, infer the fuzzy control action from the knowledge of the control rules and linguistic variable definitions; a de-fuzzification interface which yields non fuzzy control action from an inferred fuzzy control action [10].

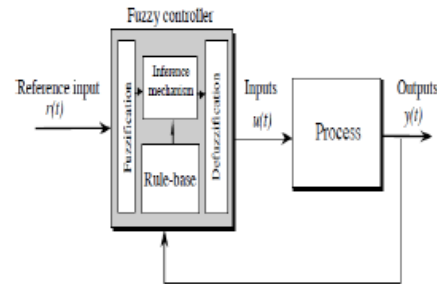


Fig.3. General structure of the fuzzy logic controller on closed-loop system

The fuzzy control systems are based on expert knowledge that converts the human linguistic concepts into an automatic control strategy without any complicated mathematical model [10]. Simulation is performed in buck converter to verify the proposed fuzzy logic controllers.

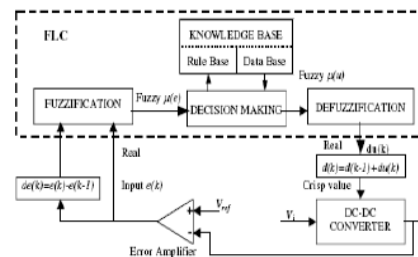


Fig.4. Block diagram of the Fuzzy Logic Controller (FLC) for dc-dc converters

### Fuzzy Logic Membership Functions:

The dc-dc converter is a nonlinear function of the duty cycle because of the small signal model and its control method was applied to the control of boost converters. Fuzzy controllers do not require an exact mathematical model. Instead, they are designed based on general knowledge of the plant. Fuzzy controllers are designed to adapt to varying operating points. Fuzzy Logic Controller is designed to control the output of boost dc-dc converter using Mamdani style fuzzy inference system. Two input variables, error ( $e$ ) and change of error ( $de$ ) are used in this fuzzy logic system. The single output variable ( $u$ ) is duty cycle of PWM output.



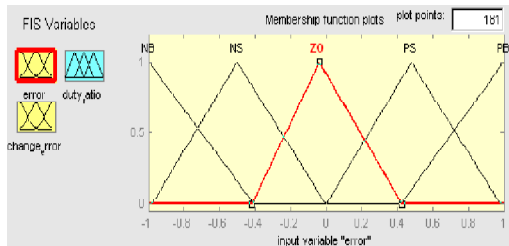


Fig. 5. The Membership Function plots of error

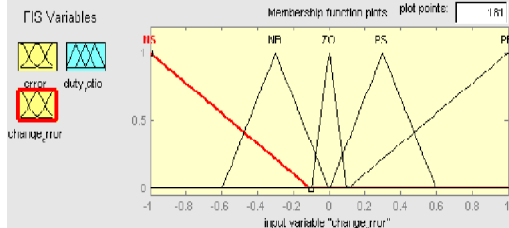


Fig. 6. The Membership Function plots of change error

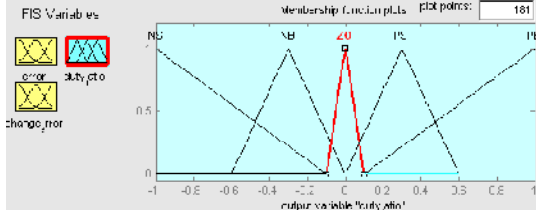


Fig. 7. The Membership Function plots

#### Fuzzy Logic Rules:

The objective of this dissertation is to control the output voltage of the boost converter. The error and change of error of the output voltage will be the inputs of fuzzy logic controller. These 2 inputs are divided into five groups; NB: Negative Big, NS: Negative Small, ZO: Zero Area, PS: Positive small and PB: Positive Big and its parameter [10]. These fuzzy control rules for error and change of error can be referred in the table that is shown in Table II as per below:

Table II

Table rules for error and change of error

(e) \ (de)	NB	NS	ZO	PS	PB
NB	NB	NB	NB	NS	ZO
NS	NB	NB	NS	ZO	PS
ZO	NB	NS	ZO	PS	PB
PS	NS	ZO	PS	PB	PB
PB	ZO	PS	PB	PB	PB

## VI. SIMULATION RESULTS

For the simulation studies to verify the proposed control approach to achieve multi-objectives for grid interfaced DG systems connected to a 3-phase 4-wire network is carried out using MATLAB/Simulink. To achieve balanced sinusoidal grid currents at unity power factor (UPF) despite of highly unbalanced nonlinear load at PCC under varying renewable generating conditions, a 4- leg current controlled voltage source inverter is

actively controlled. A RES with variable output power is connected on the dc-link of grid-interfacing inverter. On the PCC, an unbalanced 3-phase 4-wire nonlinear load, whose unbalance, harmonics, and reactive power need to be compensated, is connected.

*Case 1: By using PI controller*

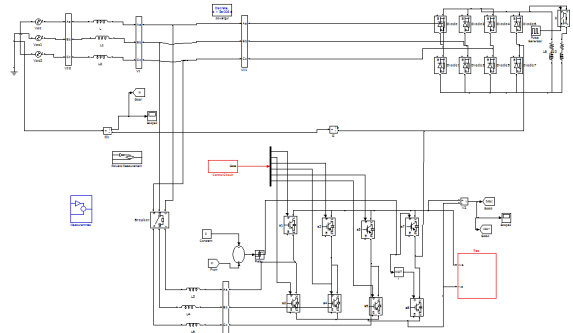


Fig. 8. Simulink circuit for proposed system

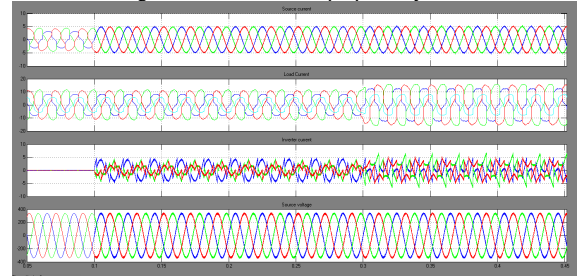


Fig. 9. simulation results for (a) source voltage (b) source current (c) load current (d) compensated currents

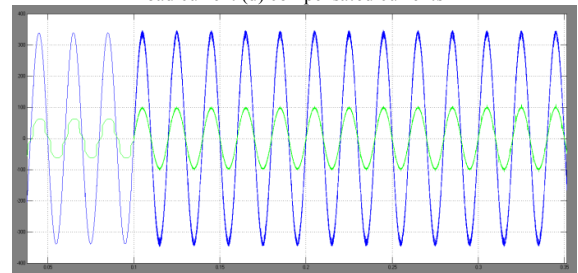


Fig. 10. simulation results for source power factor

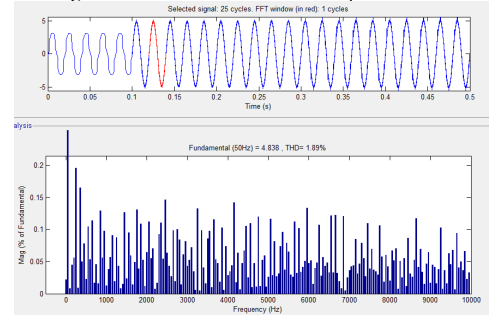


Fig. 11. FFT analysis for source current by using PI controller  
*Case 2: By using fuzzy controller*

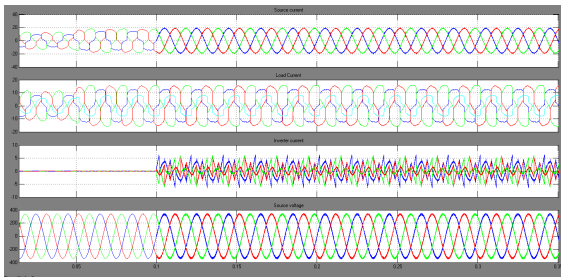


Fig. 12. simulation results for (a) source voltage (b) source current (c) load current (d) compensated currents

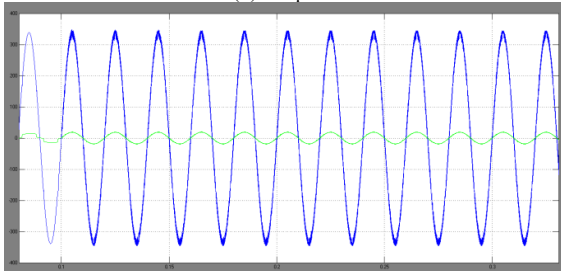


Fig. 13. simulation results for source power factor

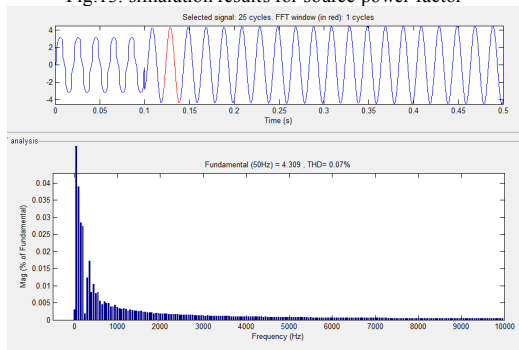


Fig. 14. FFT analysis for source current by using fuzzy controller.

## VII. CONCLUSION

This paper presented the control of grid interfacing inverter to improve the power quality at PCC for a 3-

phase 4-wire DG System. Grid interfacing inverter can be effectively utilized for power conditioning without affecting its normal operation of power transfer. This inverter can be utilized to inject the power generated from RES to the grid and/or to operate as a shunt Active Power Filter (APF). This process eliminates the need for additional power conditioning equipment to improve of power at PCC. MATLAB/Simulink simulation and Fuzzy logic based results have validated this process and thus this inverter can be utilized as a multifunction device.

## REFERENCES

- [1] J. M. Guerrero, L. G. de Vicuna, J. Matas, M. Castilla, and J. Miret, "A wireless controller to enhance dynamic performance of parallel inverters in distributed generation systems," *IEEE Trans. Power Electron.*, vol. 19, no. 5, pp. 1205–1213, Sep. 2004.
- [2] J. H. R. Enslin and P. J. M. Heskes, "Harmonic interaction between a large number of distributed power inverters and the distribution network," *IEEE Trans. Power Electron.*, vol. 19, no. 6, pp. 1586–1593, Nov. 2004.
- [3] U. Borup, F. Blaabjerg, and P. N. Enjeti, "Sharing of nonlinear load in parallel-connected three-phase converters," *IEEE Trans. Ind. Appl.*, vol. 37, no. 6, pp. 1817–1823, Nov./Dec. 2001.
- [4] P. Jintakosonwitt, H. Fujita, H. Akagi, and S. Ogasawara, "Implementation and performance of cooperative control of shunt active filters for harmonic damping throughout a power distribution system," *IEEE Trans. Ind. Appl.*, vol. 39, no. 2, pp. 556–564, Mar./Apr. 2003.
- [5] J. P. Pinto, R. Pregitzer, L. F. C. Monteiro, and J. L. Afonso, "3-phase 4-wire shunt active power filter with renewable energy interface," presented at the Conf. IEEE Renewable Energy & Power Quality, Seville, Spain, 2007.
- [6] F. Blaabjerg, R. Teodorescu, M. Liserre, and A. V. Timbus, "Overview of control and grid synchronization for distributed power generation systems," *IEEE Trans. Ind. Electron.*, vol. 53, no. 5, pp. 1398–1409, Oct. 2006.
- [7] J. M. Carrasco, L. G. Franquelo, J. T. Bialasiewicz, E. Galván, R. C. P. Guisado, M. Á. M. Prats, J. I. León, and N. M. Alfonso, "Power electronic systems for the grid integration of renewable energy sources: A survey," *IEEE Trans. Ind. Electron.*, vol. 53, no. 4, pp. 1002–1016, Aug. 2006.